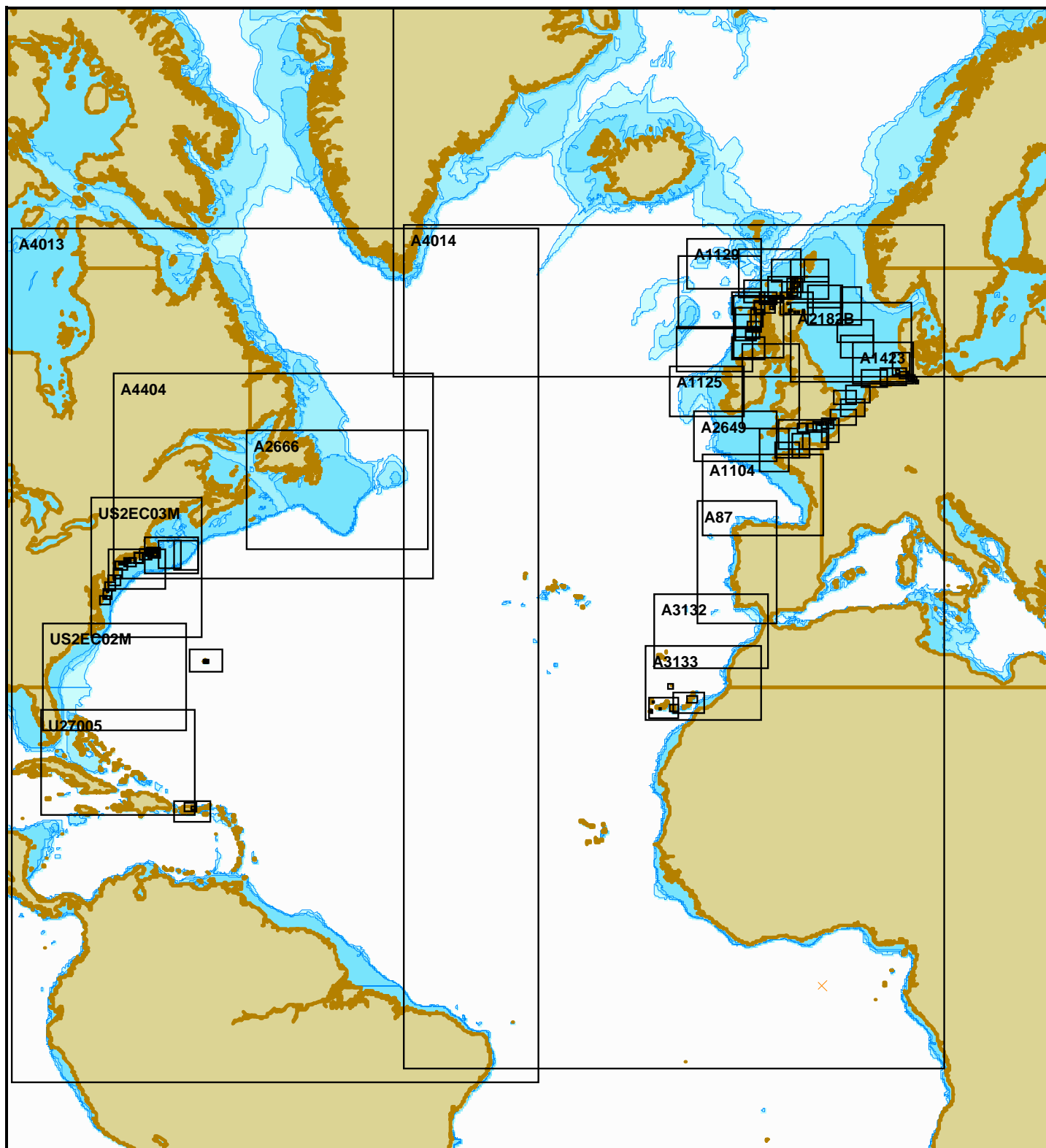


## Charts of Folio DCNAC2EL (Collection WF 47)



Charts: 105, Inserts: 53, Size: 18 Mb

File Name	Scale	Update d	Inserts	Issue	Description	Ref. Number
A1104	1:1 000 000	04.03.2010	0	WF 47 Disk #1 (Main Collection)	BAY OF BISCAY.	TR-CH-11
A1119	1:200 000	04.03.2010	0	WF 47 Disk #1 (Main Collection)	BRITISH ISLES. ORKNEY AND SHETLAND ISLANDS. FAIR ISLE CHANNEL.	TR-CH-11
A1125	1:500 000	04.03.2010	0	WF 47 Disk #1 (Main Collection)	NORTH ATLANTIC OCEAN. BRITISH ISLES. WESTERN APPROACHES TO IRELAND	TR-CH-11
A1129	1:500 000	04.03.2010	0	WF 47 Disk #1 (Main Collection)	NORTH ATLANTIC OCEAN. BANKS NORTH-WEST OF THE HEBRIDES.	TR-CH-11
A1115	1:200 000	04.03.2010	0	WF 47 Disk #1 (Main Collection)	SCOTLAND - EAST COAST. MORAY FIRTH.	TR-CH-11
A1234	1:200 000	04.03.2010	0	WF 47 Disk #1 (Main Collection)	UNITED KINGDOM. NORTH - WESTERN APPROACHES TO THE ORKNEY ISLANDS.	TR-CH-11
A1423	1:375 000	25.02.2010	0	WF 47 Disk #1 (Main Collection)	NORTH SEA. TERSCHELLING TO ESBJERG.	TR-CH-11
A1462A	1:7 500	04.03.2010	10	WF 47 Disk #1 (Main Collection)	HARBOURS ON THE NORTH AND EAST COASTS OF SCOTLAND. WICK AND APPROACHES	TR-CH-11

A1504	1:150 000	04.03.2010	0	WF 47 Disk #1 (Main Collection)	ENGLAND - EAST COAST. CROMER TO ORFORD NESS.	TR-CH-11
A1652	1:75 000	04.03.2010	0	WF 47 Disk #1 (Main Collection)	ENGLAND - SOUTH COAST. SELSEY BILL TO BEACHY HEAD.	TR-CH-11
A1869	1:300 000	04.03.2010	0	WF 47 Disk #1 (Main Collection)	NORTH ATLANTIC OCEAN - ISLAS CANARIAS. GRAN CANARIA TO HIERRO.	TR-CH-11
A1870	1:300 000	04.03.2010	0	WF 47 Disk #1 (Main Collection)	NORTH ATLANTIC OCEAN. ISLAS CANARIAS. LANZAROTE TO GRAN CANARIA.	TR-CH-11
A1942	1:200 000	04.03.2010	0	WF 47 Disk #1 (Main Collection)	SCOTLAND - NORTH COAST. FAIR ISLE TO WICK.	TR-CH-11
A1991A	1:5 000	04.03.2010	3	WF 47 Disk #1 (Main Collection)	HARBOURS ON THE SOUTH COAST OF ENGLAND. BRIGHTON MARINA.	TR-CH-11
A2044A	1:5 000	04.03.2010	2	WF 47 Disk #1 (Main Collection)	ENGLAND - SOUTH COAST. SHOREHAM HARBOUR. WESTERN ARM AND RIVER ADUR.	TR-CH-11
A2045	1:75 000	04.03.2010	0	WF 47 Disk #1 (Main Collection)	ENGLAND - SOUTH COAST. OUTER APPROACHES TO THE SOLENT.	TR-CH-11
A2182B	1:750 000	04.03.2010	0	WF 47 Disk #1 (Main Collection)	NORTH SEA. CENTRAL SHEET.	TR-CH-11
A2249	1:75 000	04.03.2010	0	WF 47 Disk #1 (Main Collection)	SCOTLAND - NORTH COAST. ORKNEY ISLANDS. WESTERN SHEET.	TR-CH-11
A2250	1:75 000	04.03.2010	0	WF 47 Disk #1 (Main Collection)	SCOTLAND - NORTH COAST. ORKNEY ISLANDS. EASTERN SHEET.	TR-CH-11
A2449	1:150 000	04.03.2010	0	WF 47 Disk #1 (Main Collection)	NORTH SEA. DOVER STRAIT TO WESTERSCHELDE.	TR-CH-11
A2451	1:150 000	04.03.2010	0	WF 47 Disk #1 (Main Collection)	ENGLISH CHANNEL. NEWHAVEN TO DOVER & CAP D'ANTIFER TO CAP GRIS-NEZ.	TR-CH-11
A2500	1:25 000	04.03.2010	2	WF 47 Disk #1 (Main Collection)	SCOTLAND - WEST COAST. APPROACHES TO ULLAPOOL.	TR-CH-11
A2503	1:25 000	04.03.2010	1	WF 47 Disk #1 (Main Collection)	SCOTLAND - WEST COAST. APPROACHES TO KINLOCHBERVIE.	TR-CH-11
A2615	1:75 000	04.03.2010	0	WF 47 Disk #1 (Main Collection)	ENGLAND - SOUTH COAST. BILL OF PORTLAND TO THE NEEDLES.	TR-CH-11
A2649	1:500 000	04.03.2010	0	WF 47 Disk #1 (Main Collection)	CELTIC SEA. WESTERN APPROACHES TO THE ENGLISH CHANNEL.	TR-CH-11
A2655	1:325 000	04.03.2010	0	WF 47 Disk #1 (Main Collection)	ENGLISH CHANNEL. WESTERN ENTRANCE.	TR-CH-11
A2656	1:325 000	04.03.2010	0	WF 47 Disk #1 (Main Collection)	ENGLISH CHANNEL. CENTRAL PART.	TR-CH-11
A2666	1:1 500 000	04.03.2010	0	WF 47 Disk #1 (Main Collection)	CANADA-EAST COAST. GRAND BANKS OF NEWFOUNDLAND.	TR-CH-11
A2669	1:150 000	04.03.2010	0	WF 47 Disk #1 (Main Collection)	ENGLISH CHANNEL. CHANNEL ISLANDS AND ADJACENT COAST OF FRANCE.	TR-CH-11
A267	1:200 000	04.03.2010	0	WF 47 Disk #1 (Main Collection)	NORTH SEA. OFFSHORE CHARTS. SHEET 10.	TR-CH-11
A272	1:200 000	04.03.2010	0	WF 47 Disk #1 (Main Collection)	NORTH SEA. OFFSHORE CHARTS. SHEET 8.	TR-CH-11
A278	1:200 000	04.03.2010	0	WF 47 Disk #1 (Main Collection)	NORTH SEA. OFFSHORE CHARTS. SHEET 5.	TR-CH-11
A291	1:200 000	04.03.2010	0	WF 47 Disk #1 (Main Collection)	NORTH SEA. OFFSHORE CHARTS. SHEET 4.	TR-CH-11
A3132	1:1 250 000	04.03.2010	0	WF 47 Disk #1 (Main Collection)	STRAIT OF GIBRALTAR TO ARQUIPELAGO DA MADEIRA.	TR-CH-11
A3133	1:1 250 000	04.03.2010	1	WF 47 Disk #1 (Main Collection)	AFRICA. CASABLANCA TO ISLAS CANARIAS (INCL. ARQUIPELAGO DA MADEIRA)	TR-CH-11
A360	1:300 000	04.03.2010	0	WF 47 Disk #1 (Main Collection)	NORTH ATLANTIC OCEAN. APPROACHES TO BERMUDA.	TR-CH-11
A4010	1:10 000 000	04.03.2010	0	WF 47 Disk #1 (Main Collection)	NORWEGIAN SEA AND ADJACENT SEAS.	TR-CH-11
A4013	1:10 000 000	04.03.2010	0	WF 47 Disk #1 (Main Collection)	NORTH ATLANTIC OCEAN. WESTERN PART.	TR-CH-11
A4014	1:10 000 000	04.03.2010	0	WF 47 Disk #1 (Main Collection)	NORTH ATLANTIC OCEAN. EASTERN PART.	TR-CH-11
A4404	1:3 500 000	04.03.2010	0	WF 47 Disk #1 (Main Collection)	NORTH ATLANTIC OCEAN. GULF OF MAINE TO STRAIT OF BELLE ISLE.	TR-CH-11
A536	1:75 000	04.03.2010	1	WF 47 Disk #1 (Main Collection)	ENGLAND - SOUTH COAST. BEACHY HEAD TO DUNGENESS.	TR-CH-11
A87	1:1 000 000	04.03.2010	0	WF 47 Disk #1 (Main Collection)	SPAIN AND PORTUGAL. CABO FINISTERRE TO THE STRAIT OF GIBRALTAR.	TR-CH-11
A886	1:75 000	04.03.2010	0	WF 47 Disk #1 (Main Collection)	ISLAS CANARIAS. ESTRECHO DE LA BOCAYNA AND APPROACHES TO ARRECIFE.	TR-CH-11
ES610	1:60 000	27.02.2010	0	WF 47 Disk #1 (Main Collection)	ISLA DE GRAN CANARIA. DEL CABO DESCOJONADO A LA PENINSULA DE GANDO.	TR-CH-11
ES6150A	1:7 500	27.02.2010	2	WF 47 Disk #1 (Main Collection)	ISLAS CANARIAS. ISLA DE LA GOMERA. PTO. DE SAN SEBASTIAN DE LA GOMERA.	TR-CH-11
FR6857	1:150 000	22.02.2010	0	WF 47 Disk #1 (Main Collection)	COTE NORD DE FRANCE. DU CAP DE LA HAGUE A FECAMP. BAIE DE SEINE.	TR-CH-11
FR6930	1:150 000	22.02.2010	0	WF 47 Disk #1 (Main Collection)	COTE N. DF RANCE. DES ROCHES DE PORTSALL AU PLATEAU DES ROCHES DOUVRES.	TR-CH-11
G103	1:150 000	26.02.2010	0	WF 47 Disk #1 (Main Collection)	NORDSEE. DEUTSCHE UND DANISCHE KUSTE. HELGOLAND BIS ROMO.	TR-CH-11
G44	1:50 000	26.02.2010	1	WF 47 Disk #1 (Main Collection)	NORDSEE. DEUTSCHE KUSTE. ELBMUNDUNG.	TR-CH-11
G46	1:30 000	26.02.2010	5	WF 47 Disk #1 (Main Collection)	NORDSEE. DIE ELBE VON DER OSTE BIS BRUNSBUTTEL UND KRAUTSAND.	TR-CH-11
G47	1:30 000	26.02.2010	1	WF 47 Disk #1 (Main Collection)	NORDSEE. DEUTSCHE KUSTE. DIE ELBE VON KRAUTSAND BIS SCHULAU.	TR-CH-11
G48A	1:30 000	26.02.2010	1	WF 47 Disk #1 (Main Collection)	NORDSEE. DEUTSCHE KUSTE. DIE ELBE VON SCHULAU BIS TEUFELSBROK.	TR-CH-11
G87	1:150 000	26.02.2010	0	WF 47 Disk #1 (Main Collection)	DEUTSCHE UND NIEDERLANDISCHE KUSTE. BORKUM BIS NEUWERK UND HELGOLAND.	TR-CH-11
G88	1:12 500	11.12.2009	0	WF 47 Disk #1 (Main Collection)	NORDSEE. DEUTSCHE KUSTE. HELGOLAND.	TR-CH-11
GB100008	1:350 000	27.03.2009	0	WF 47 Disk #1 (Main Collection)	BRITISH ISLES. WESTERN APPROACHES TO THE ORKNEY AND SHETLAND ISLANDS.	TR-CH-11
GB100010	1:350 000	17.08.2009	0	WF 47 Disk #1 (Main Collection)	NORTH ATLANTIC OCEAN. BANKS WEST OF THE HEBRIDES.	TR-CH-11
GB100011	1:350 000	18.11.2009	1	WF 47 Disk #1 (Main Collection)	BRITISH ISLES. SCOTLAND WEST COAST.	TR-CH-11
GB100013	1:350 000	13.11.2009	0	WF 47 Disk #1 (Main Collection)	NORTH ATLANTIC OCEAN. BRITISH ISLES. OUTER APPROACHES TO THE NORTH CHANNEL.	TR-CH-11
GB206800	1:180 000	30.03.2009	0	WF 47 Disk #1 (Main Collection)	SCOTLAND - N COAST. CAPE WRATH TO PENTLAND FIRTH.	TR-CH-11
GB207000	1:180 000	07.07.2009	0	WF 47 Disk #1 (Main Collection)	SCOTLAND - NORTH COAST. FLANNAN ISLES TO SULE SKERRY.	TR-CH-11
GB207200	1:180 000	17.08.2009	0	WF 47 Disk #1 (Main Collection)	SCOTLAND - WEST COAST. SAINT KILDA TO BUTT OF LEWIS.	TR-CH-11
GB207400	1:180 000	07.04.2009	0	WF 47 Disk #1 (Main Collection)	SCOTLAND - WEST COAST. SKERRYVORE TO SAINT KILDA.	TR-CH-11
GB207600	1:180 000	11.12.2009	0	WF 47 Disk #1 (Main Collection)	WESTERN APPROACHES TO THE NORTH CHANNEL	TR-CH-11
GB306820	1:45 000	30.03.2009	0	WF 47 Disk #1 (Main Collection)	SCOTLAND - NORTH COAST. PENTLAND FIRTH AND APPROACHES.	TR-CH-11

GB307020	1:90 000	22.07.2009	0	WF 47 Disk #1 (Main Collection)	SCOTLAND - WEST COAST. NORTH MINCH. NORTHERN PART.	TR-CH-11
GB307220	1:90 000	27.10.2009	0	WF 47 Disk #1 (Main Collection)	SCOTLAND - WEST COAST. NORTH MINCH. SOUTHERN PART.	TR-CH-11
GB307420	1:90 000	16.11.2009	0	WF 47 Disk #1 (Main Collection)	SCOTLAND - WEST COAST. THE LITTLE MINCH.	TR-CH-11
GB307440	1:90 000	21.10.2009	0	WF 47 Disk #1 (Main Collection)	SCOTLAND - WEST COAST. BARRA HEAD TO POINT OF ARDNAMURCHAN.	TR-CH-11
GB307460	1:90 000	06.04.2009	0	WF 47 Disk #1 (Main Collection)	SCOTLAND-WEST COAST.STANTON BANKS TO PASSAGE OF TIREE.	TR-CH-11
GB40684B	1:22 000	20.01.2010	1	WF 47 Disk #1 (Main Collection)	SCOTLAND - N COAST. ORKNEY ISLANDS. SOUNDS OF RAPNESS, FARAY, EDAY AND SANDAY.	TR-CH-11
NL1630	1:150 000	25.02.2010	0	WF 47 Disk #1 (Main Collection)	NETHERLANDS. WEST HINDER & OUTER GABBARD TO VLISSINGEN & SCHEVENINGEN.	TR-CH-11
NL1631	1:150 000	25.02.2010	0	WF 47 Disk #1 (Main Collection)	NETHERLANDS. NORTH SEA. DW ROUTES TO IJMUIDEN AND TEXEL.	TR-CH-11
NL1633	1:150 000	25.02.2010	0	WF 47 Disk #1 (Main Collection)	NORTH SEA. FRIESLAND JUNCTION AND GW/EMS TO VLIELAND AND BORKUM.	TR-CH-11
NO2B0404	1:700 000	14.12.2009	0	WF 47 Disk #1 (Main Collection)	NORSKERENNA	TR-CH-11
U12352A	1:40 000	13.02.2010	6	WF 47 Disk #2 (Main Collection)	U.S. SOUTH COAST OF LONG I. SHINNECOCK BAY TO EAST ROCKAWAY INLET.	TR-CH-10
U13200	1:400 000	13.02.2010	0	WF 47 Disk #2 (Main Collection)	UNITED STATES - EAST COAST. GEORGES BANK AND NANTUCKET SHOALS.	TR-CH-10
U13229A	1:40 000	13.02.2010	6	WF 47 Disk #2 (Main Collection)	U.S. MASSACHUSETTS. SOUTH COAST OF CAPE COD. NANTUCKET SOUND.	TR-CH-10
U13233	1:40 000	13.02.2010	1	WF 47 Disk #2 (Main Collection)	UNITED STATES - EAST COAST. MASSACHUSETTS. MARTHA'S VINEYARD.	TR-CH-10
U13238	1:20 000	13.02.2010	3	WF 47 Disk #2 (Main Collection)	U.S. - EAST COAST. MASSACHUSETTS. MARTHA'S VINEYARD - EASTERN PART.	TR-CH-10
U13241	1:40 000	13.02.2010	0	WF 47 Disk #2 (Main Collection)	UNITED STATES - EAST COAST. MASSACHUSETTS. NANTUCKET ISLAND.	TR-CH-10
U26342	1:17 500	13.02.2010	0	WF 47 Disk #2 (Main Collection)	NORTH ATLANTIC OCEAN. BERMUDA. THE NARROWS to GRASSY BAY.	TR-CH-10
U26344	1:10 000	13.02.2010	1	WF 47 Disk #2 (Main Collection)	NORTH ATLANTIC OCEAN.BERMUDA ISLANDS. GREAT SOUND.	TR-CH-10
U27005	1:1 500 000	13.02.2010	0	WF 47 Disk #2 (Main Collection)	NORTH ATLANTIC OCEAN-CARRIBEAN SEA.WEST INDIES. KEY WEST TO SAN JUAN.	TR-CH-10
US2EC02M	1:1 200 000	24.11.2009	0	WF 47 Disk #2 (Main Collection)	CAPE HATTERAS TO STRAITS OF FLORIDA	TR-CH-10
US2EC03M	1:1 200 000	13.10.2009	0	WF 47 Disk #2 (Main Collection)	CAPE SABLE TO CAPE HATTERAS	TR-CH-10
US3EC06M	1:220 000	08.07.2009	0	WF 47 Disk #2 (Main Collection)	GEORGES BANK WEST APRT SPEC CHT FOR FISHING INDUSTRY	TR-CH-10
US3EC07M	1:220 000	11.01.2010	0	WF 47 Disk #2 (Main Collection)	GEORGES BANK EAST PART SPEC CHT FOR FISHING INDUSTRY	TR-CH-10
US3NY01M	1:400 000	01.10.2009	0	WF 47 Disk #2 (Main Collection)	APPROACHES TO NEW YORK NANTUCKET SHOALS TO FIVE FATHOM BANK	TR-CH-10
US3PR10M	1:326 856	16.12.2009	0	WF 47 Disk #2 (Main Collection)	PUERTO RICO AND VIRGIN ISLANDS	TR-CH-10
US4CN21M	1:80 000	14.01.2010	1	WF 47 Disk #2 (Main Collection)	BLOCK ISLAND SOUND AND APPROACHES	TR-CH-10
US4DE11M	1:80 000	02.02.2010	0	WF 47 Disk #2 (Main Collection)	CAPE MAY TO FENWICK ISLAND	TR-CH-10
US4MA23M	1:80 000	20.10.2009	0	WF 47 Disk #2 (Main Collection)	MARTHA'S VINEYARD TO BLOCK ISLAND	TR-CH-10
US4MA43M	1:80 000	16.11.2009	0	WF 47 Disk #2 (Main Collection)	NANTUCKET SOUND AND APPROACHES	TR-CH-10
US4NJ22M	1:80 000	29.07.2009	1	WF 47 Disk #2 (Main Collection)	LITTLE EGG INLET TO HEREFORD INLET	TR-CH-10
US4NJ23M	1:80 000	22.06.2009	0	WF 47 Disk #2 (Main Collection)	SEA GIRT TO LITTLE EGG INLET	TR-CH-10
US4NY1AM	1:80 000	11.12.2009	0	WF 47 Disk #2 (Main Collection)	APPROACHES TO NEW YORK FIRE ISLAND LIGHT TO SEA GIRT	TR-CH-10
US4NY53M	1:80 000	21.07.2009	0	WF 47 Disk #2 (Main Collection)	SHINNECOCK LIGHT TO FIRE ISLAND LIGHT	TR-CH-10
US4PR31M	1:100 000	08.04.2008	0	WF 47 Disk #2 (Main Collection)	PUNTA PENON TO PUNTA VACIA TALEGA	TR-CH-10
US4VA50M	1:80 000	22.10.2009	1	WF 47 Disk #2 (Main Collection)	FENWICK ISLAND TO CHINCOTEAGUE INLET	TR-CH-10
US4VA70M	1:80 000	22.10.2009	1	WF 47 Disk #2 (Main Collection)	CHINCOTEAGUE INLET TO GREAT MACHIPONGO INLET	TR-CH-10
US5MA24M	1:20 000	09.12.2009	0	WF 47 Disk #2 (Main Collection)	WESTPORT RIVER AND APPROACHES	TR-CH-10
US5MA25M	1:40 000	23.11.2009	0	WF 47 Disk #2 (Main Collection)	BUZZARDS BAY	TR-CH-10
US5MA28M	1:5 000	01.02.2010	0	WF 47 Disk #2 (Main Collection)	WOODS HOLE	TR-CH-10
US5MA40M	1:10 000	25.09.2009	0	WF 47 Disk #2 (Main Collection)	NANTUCKET HARBOR	TR-CH-10
US5PR32M	1:10 000	27.07.2009	0	WF 47 Disk #2 (Main Collection)	BAHIA DE SAN JUAN	TR-CH-10